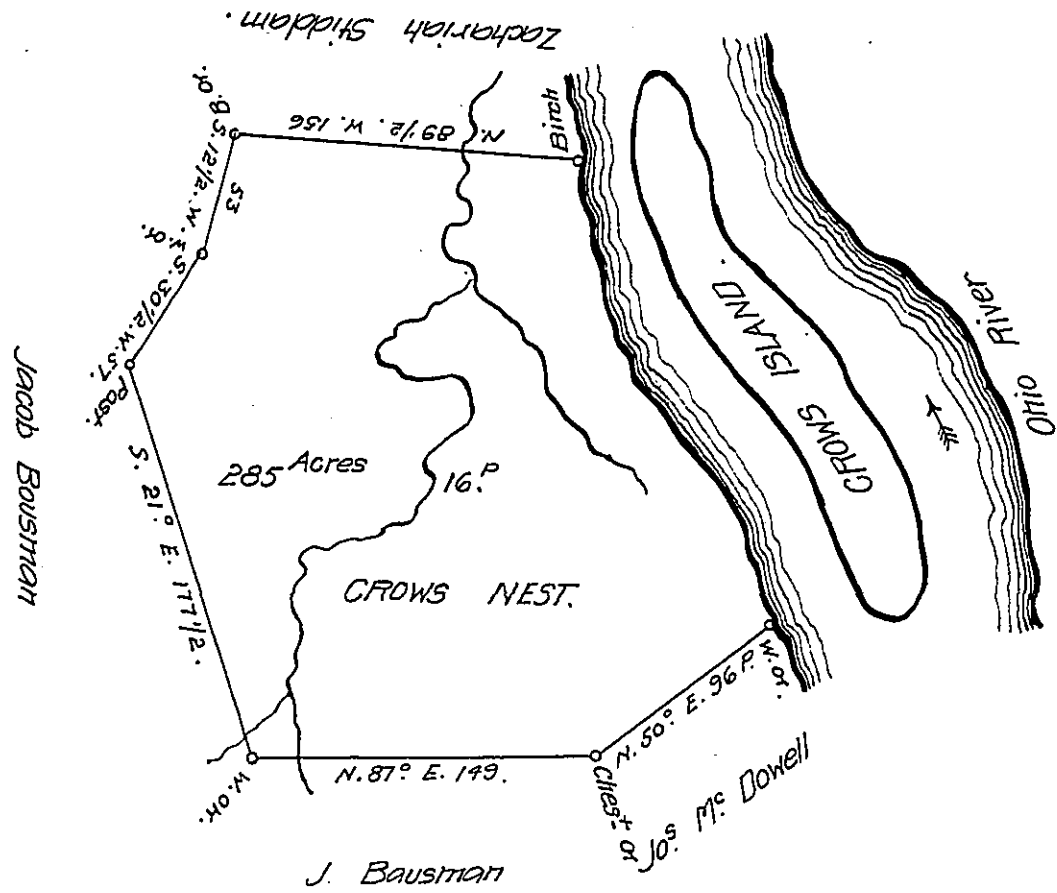


Courses & Dist.<sup>s</sup>  
 down y<sup>e</sup> Ohio.  
 N. 19° W. 60.  
 N. 32° W. 20.  
 N. 44° W. 62.  
 N. 24 1/2° W. 38.  
 N. 11 1/2° W. 22.  
 N. 8° W. 21.



A Draught of a Survey call'd the Crows Nest Situate on the River Ohio in Washington County Containing 285 Acres and 16 Perches & the usual allow<sup>e</sup> for Roads &c<sup>a</sup>. Executed March 15<sup>th</sup> 1788. In Pursuance of a Warrant granted to James Gibson for 400 Acres dated April 25<sup>th</sup> 1785.

Presley Nevill

D. Sis

Matthew Ritchie

John Lukers Esq<sup>r</sup> S. Gent.

IN TESTIMONY that the above is a copy of the original remaining on file in the Department of Internal Affairs of Pennsylvania, made conformably to an Act of Assembly approved the 16th day of February, 1833, I have hereunto set my Hand and caused the Seal of said Department to be affixed at Harrisburg, this seventh day of April 1908.

Henry Howells  
 Secretary of Internal Affairs.